



**ACTER**

ASEAN Community for  
Transdisciplinary Education and Research

# How transdisciplinary integration will fail...

cartoon series

© Eawag: Lisa Deutsch & Sabine Hoffmann;  
Stückelberger Cartoons: Christof Stückelberger, CC BY-NC-ND 4.0



Co-funded by  
the European Union



DEUTSCH, HOFFMANN, STÜCKELBERGER

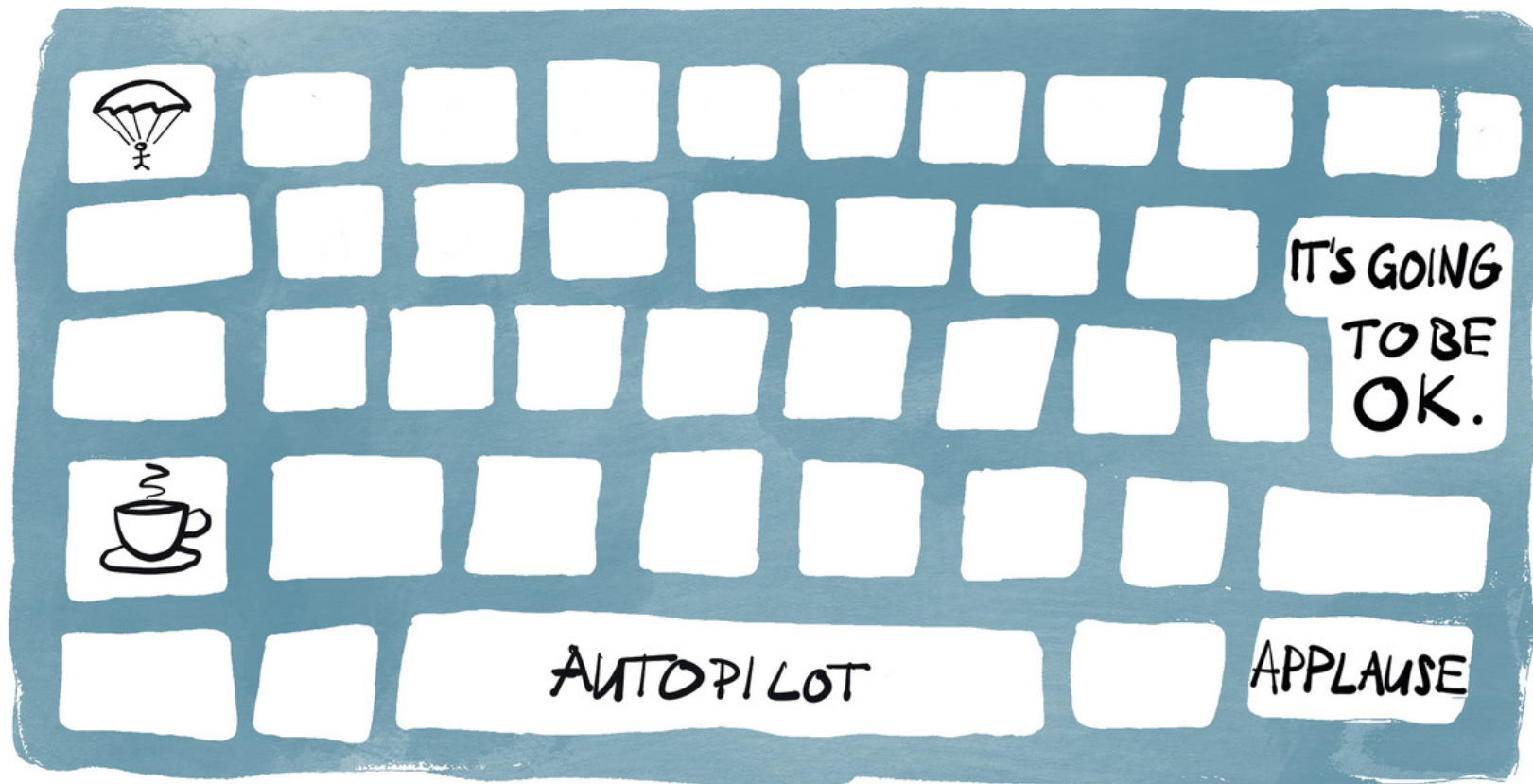
GET AS MANY ALPHA ANIMALS ON BOARD AS POSSIBLE

OK, LET'S GET STARTED



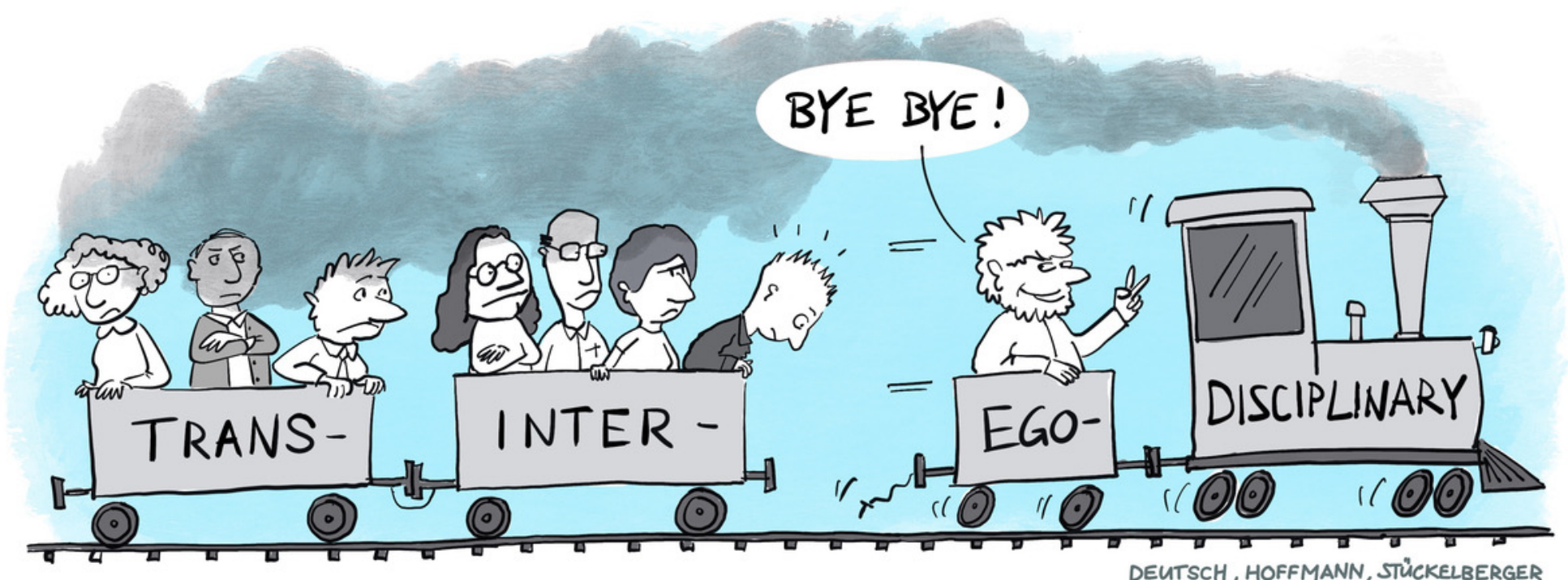
DEUTSCH, HOFFMANN, STÜCKELBERGER

BECOME A ROLE MODEL OF DESTRUCTIVE BEHAVIOR



DEUTSCH, HOFFMANN, STÜCKELBERGER

LEAN BACK AND LET THE CHAOS UNFOLD



DEUTSCH, HOFFMANN, STÜCKELBERGER

UNCOUPLE YOUR OWN RESEARCH AND MAKE A QUICK GETAWAY



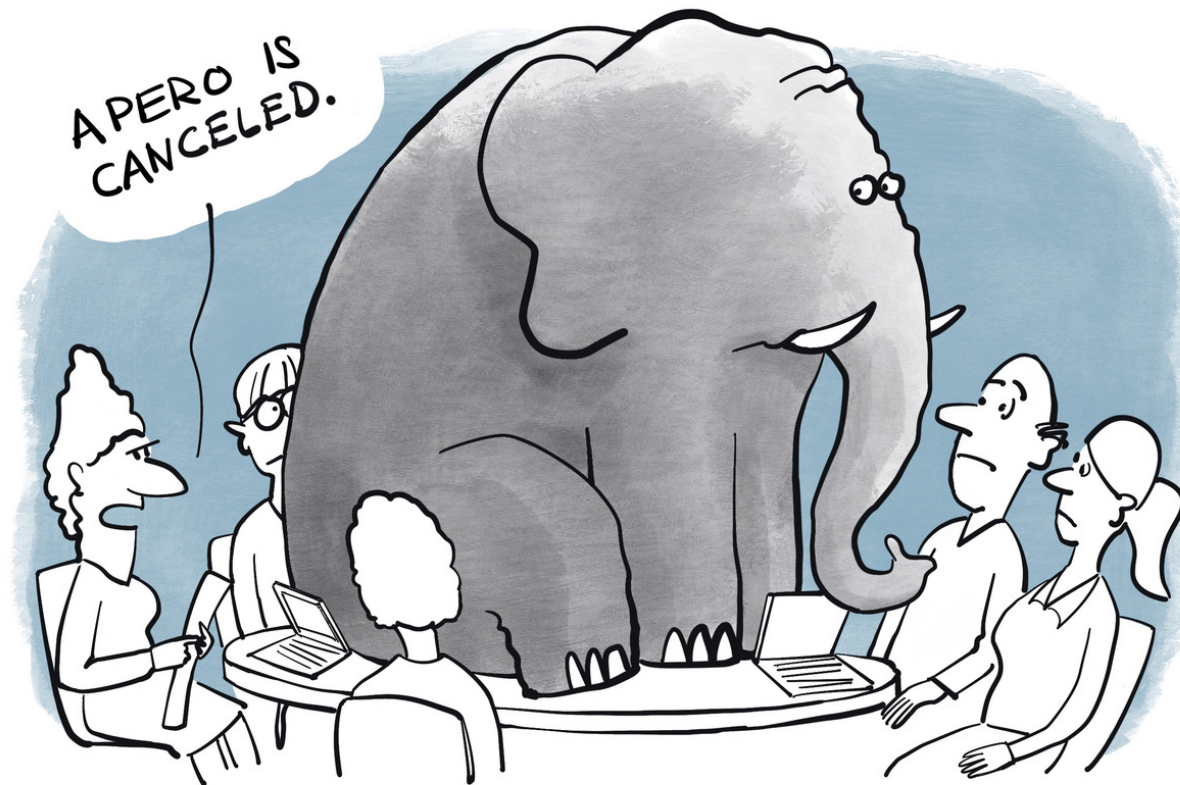
NEVER LET THE DISCUSSION END



DEUTSCH, HOFFMANN, STÜCKELBERGER

## HERDING CATS

# THE AGENDA



DEUTSCH, HOFFMANN, STÜCKELBERGER

FOCUS ON WHAT IS REALLY IMPORTANT AND  
LEAVE OUT ALL INTERPERSONAL ASPECTS

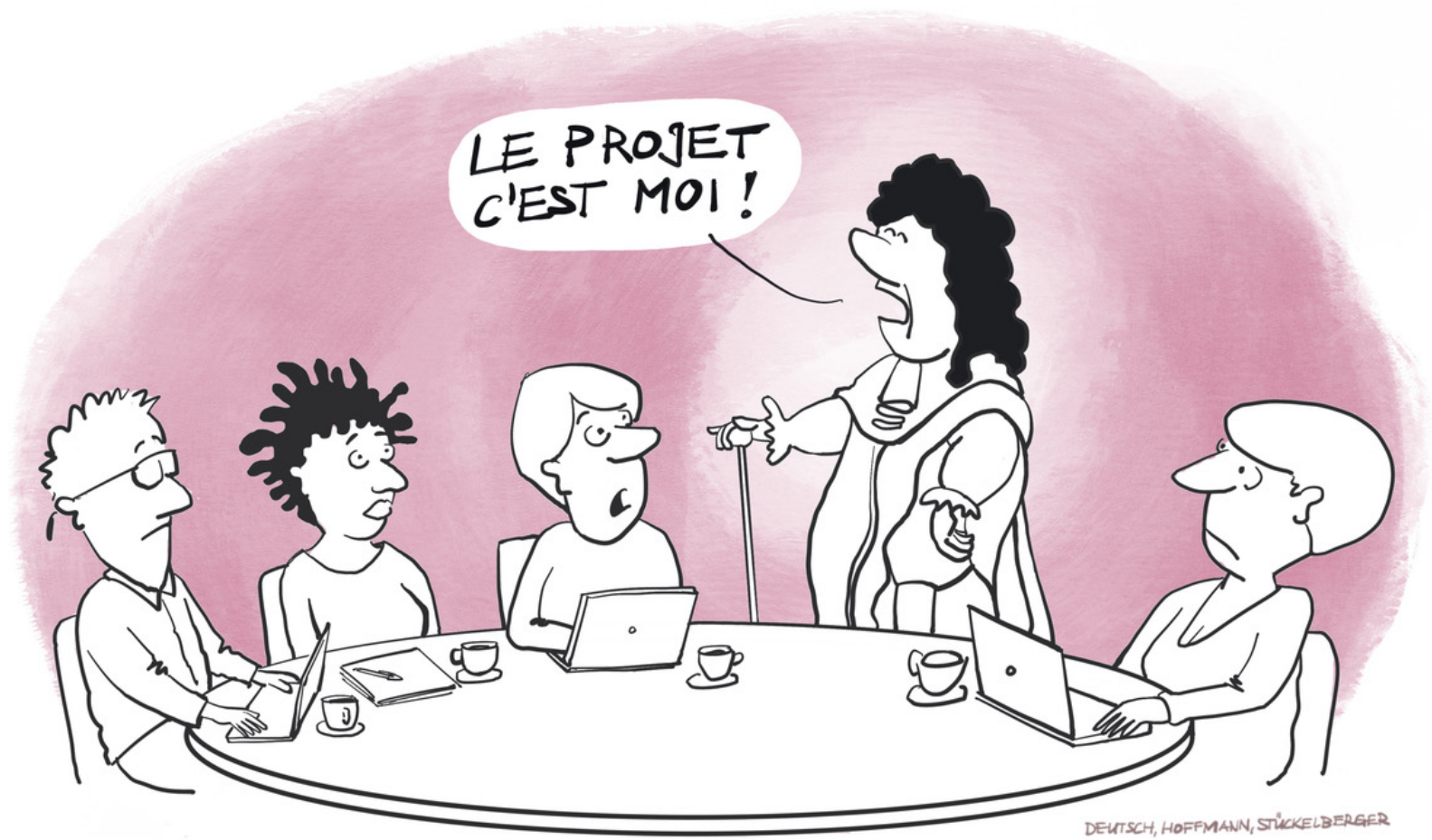


AH, THIS WILL MAKE MY COMPOST HAPPY !



DEUTSCH, HOFFMANN, STÜCKELBERGER

FOLLOW BUSINESS-AS-USUAL AND  
DISMISS OTHER PERSPECTIVES



AVOID COLLABORATION AS EQUAL PARTNERS

DON'T MIND HIM! HE'S JUST AN  
EARLY CAREER RESEARCHER.



DENY EARLY CAREER RESEARCHERS ANY COMPETENCIES

WE ARE RIGHT!

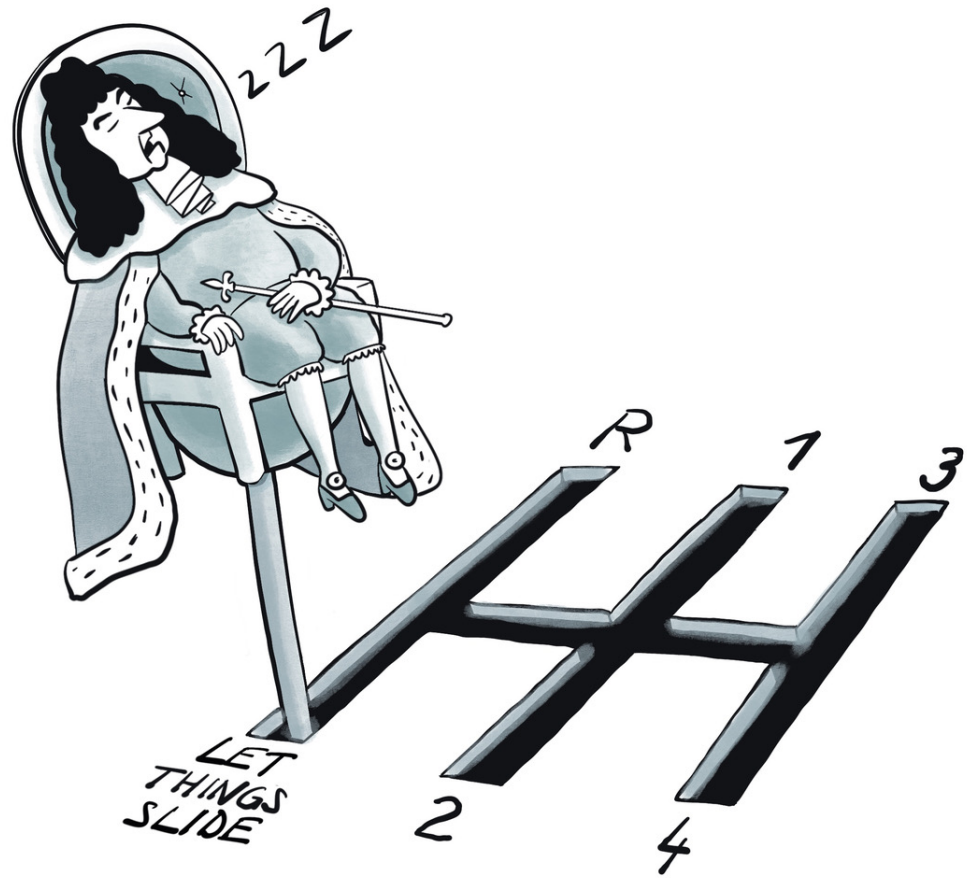
NO, WE ARE!

NO, WE ARE!



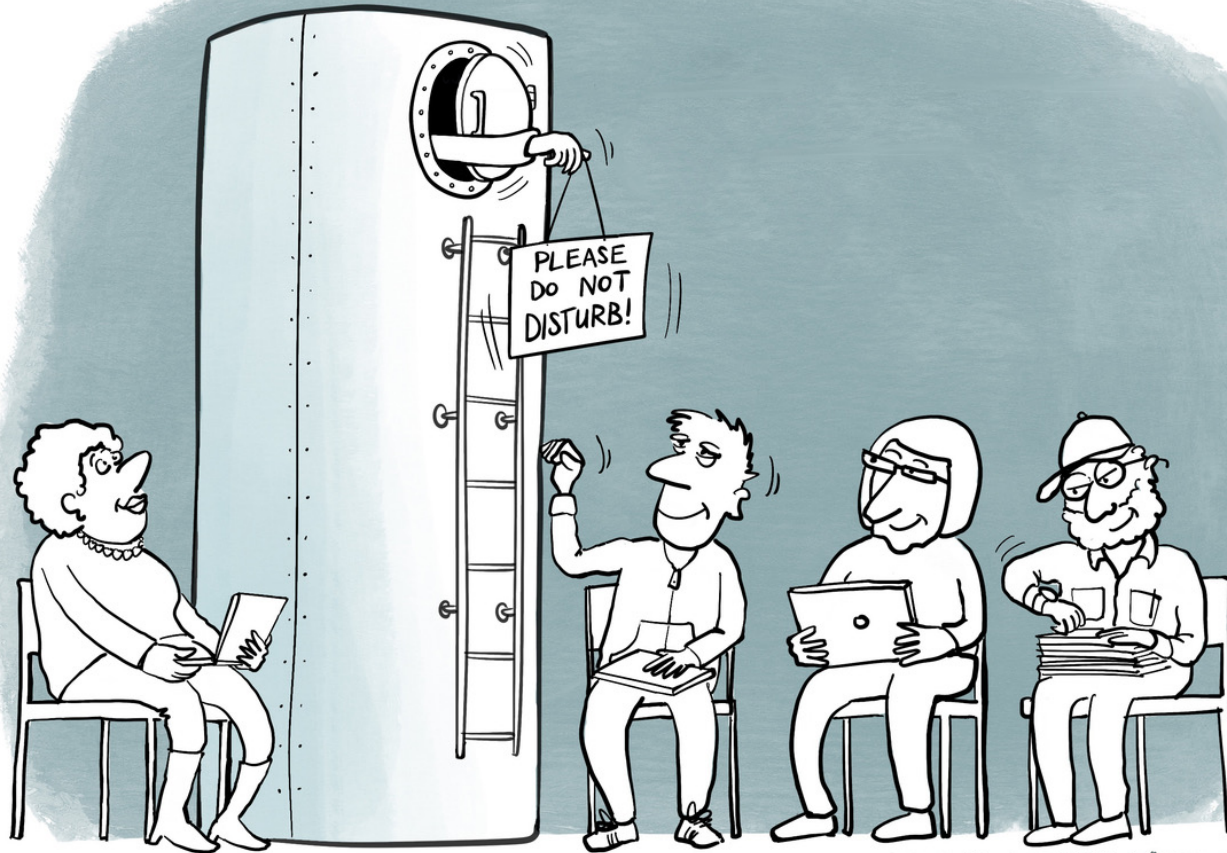
DEUTSCH, HOFFMANN, STÜCKELBERGER

NEVER LET GO



DEUTSCH, HOFFMANN, STÜCKELBERGER

TRUST THAT INTEGRATION WILL  
AUTOMATICALLY HAPPEN



DEUTSCH, HOFFMANN, STÜCKELBERGER

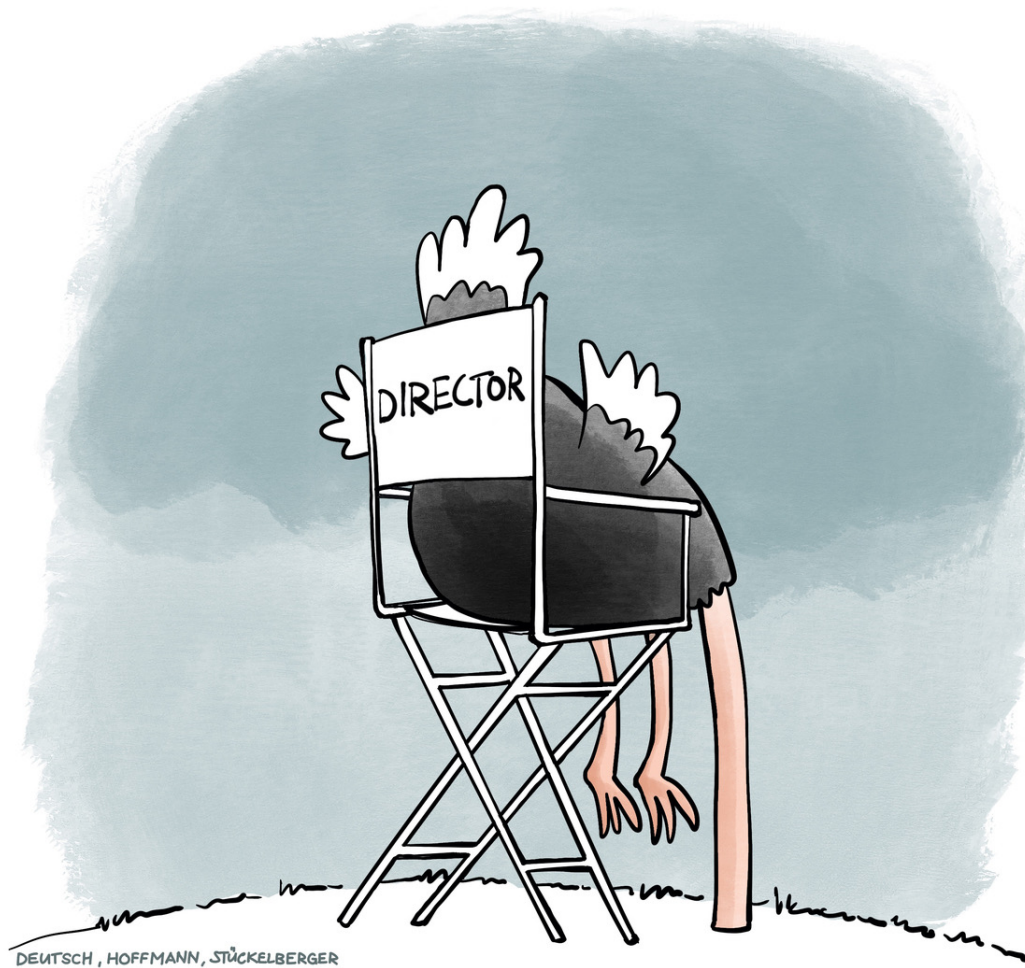
STAY INSIDE YOUR SILO

THE SYNTHESIS!



DEUTSCH, HOFFMANN, STÜCKELBERGER

PANIC SETS IN



DEUTSCH, HOFFMANN, STÜCKELBERGER

BURY YOUR HEAD IN THE SAND FOR A WHILE



# Bibliography

- Deutsch, L.; Björnsen, A.; Fischer, A. M.; Hama, A. M.; Zimmermann, N. E.; Zurbrügg, C.; Hoffmann, S. (2024) Herding cats: integrative leadership strategies in inter- and transdisciplinary research programs, *Sustainability Science*, [doi:10.1007/s11625-024-01585-4](https://doi.org/10.1007/s11625-024-01585-4)
- Deutsch, L. (2024) Practicing integration in inter- and transdisciplinary research: the role of enabling conditions and integrative leadership, 145 p, [doi:10.3929/ethz-b-000698963](https://doi.org/10.3929/ethz-b-000698963)
- Hoffmann, S.; Deutsch, L.; O'Rourke, M. (2024) Integration experts and expertise, *In: Darbellay, F. (Eds.), Elgar encyclopedia of interdisciplinarity and transdisciplinarity*, 273-276, [doi:10.4337/9781035317967.ch60](https://doi.org/10.4337/9781035317967.ch60)
- Hoffmann, S.; Deutsch, L.; Thompson Klein, J.; O'Rourke, M. (2022) Integrate the integrators! A call for establishing academic careers for integration experts, *Humanities and Social Sciences Communications*, 9, 147 (10 pp.), [doi:10.1057/s41599-022-01138-z](https://doi.org/10.1057/s41599-022-01138-z)
- Deutsch, L.; Belcher, B.; Claus, R.; Hoffmann, S. (2021) Leading inter- and transdisciplinary research: lessons from applying theories of change to a strategic research program, *Environmental Science and Policy*, 120, 29-41, [doi:10.1016/j.envsci.2021.02.009](https://doi.org/10.1016/j.envsci.2021.02.009)